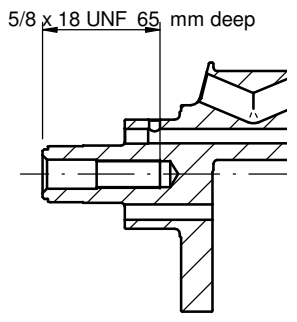
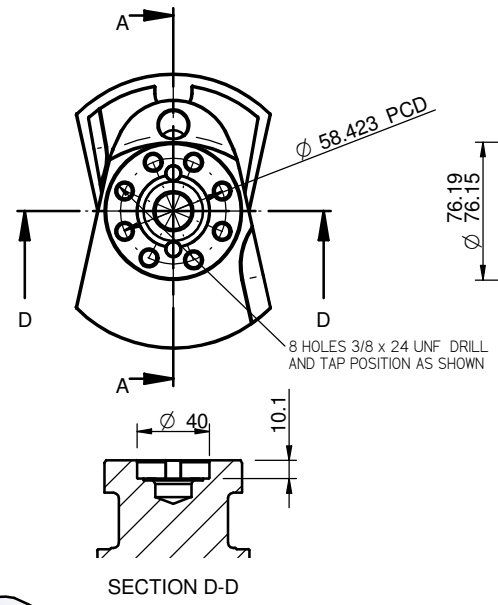


DO NOT SCALE; IF IN DOUBT ASK

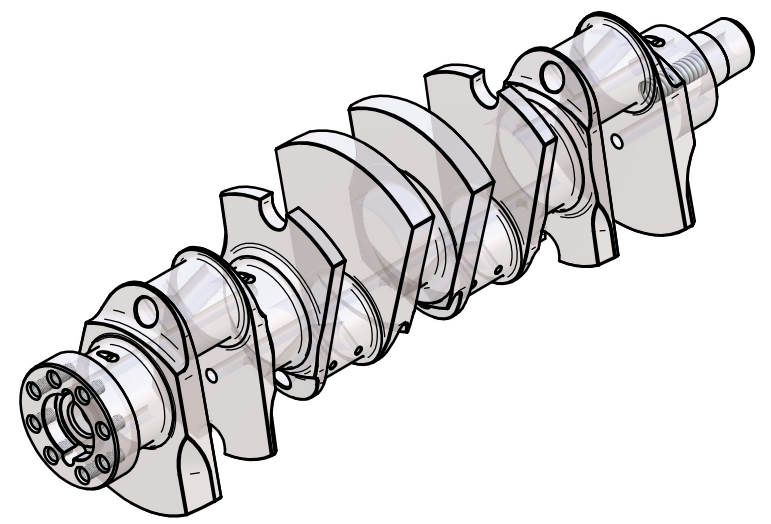
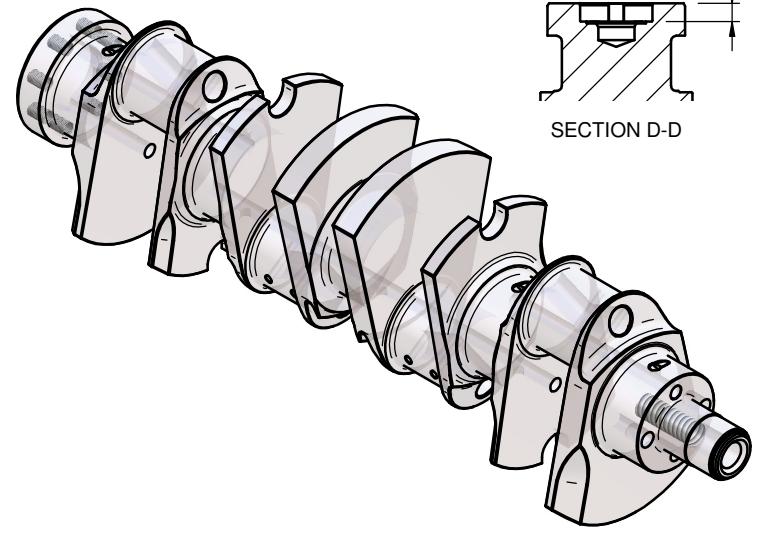
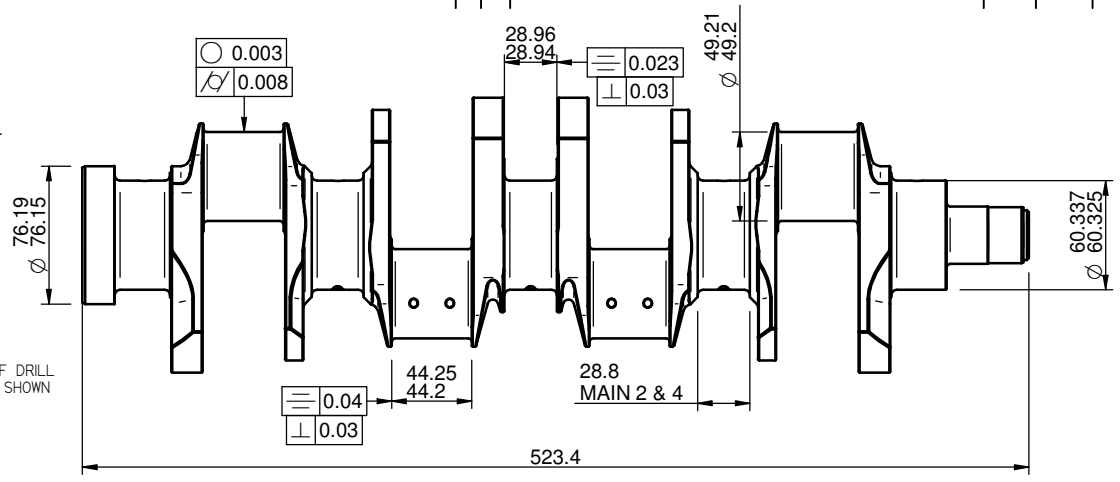
No.	Loc.	Description	ECR No.	Date	By
1		NEW DRAWING			



SECTION A-A



SECTION D-D



BALANCE 2gms Cm  
ESTIMATED CRANK Wt 14.595 Kgms

**SWINDON RACING ENGINES Ltd.**

NOTES  
GAS NITRIDE FOR  
65 HRS AT 510 /  
515 C TO  
ACHIEVE  
CASE DEPTH OF  
0.4 / 0.45mm.

PROJECTION	
MACHINING TOL. UNLESS STATED	
GEN TOLS +/- 0.2	
GEN MC	3
DIMENSIONS IN	mm
Modelled By -	MICK VINES

Engine -	3 Ltr 32v V8 DFV
Title -	SRE CRANKSHAFT 64.8mm STROKE
Mat'l -	Steel S 106 T' CONDITON
Treatment -	
Sheet -	of
Issue -	1
Scale -	1:2 @ A2
Date -	08/03/07
Detailled By -	MICK
Drq No. -	DFV 2064

Product Spec Sheet DFV 2064 SRE CRANKSHAFT 64,8mm STROKE