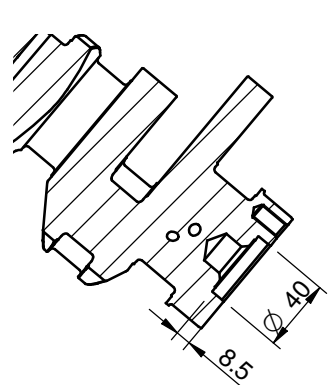
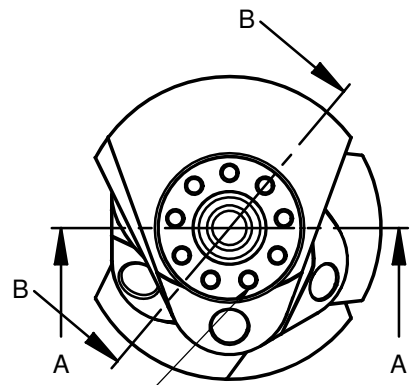


DO NOT SCALE; IF IN DOUBT ASK

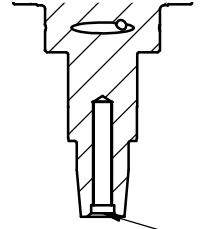
No.	Loc.	Description	ECR No.	Date	By
1		NEW DRAWING			



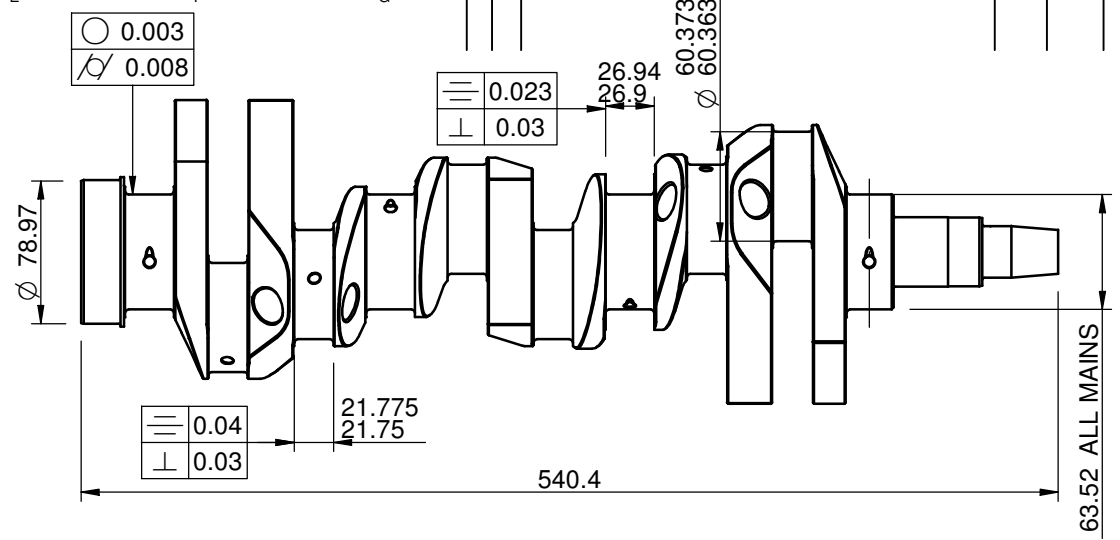
SECTION B-B



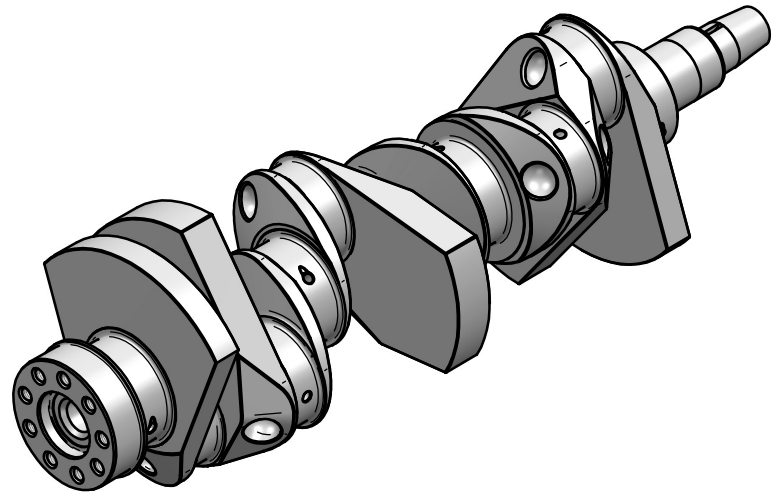
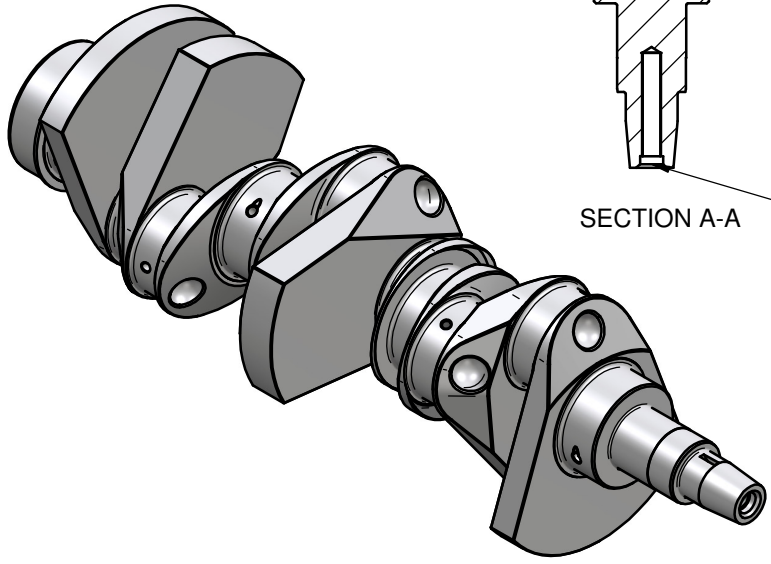
9 HOLES 3/8 x24 UNF



SECTION A-A 7/16 - 20 UNF THREAD



63.52 ALL MAINS



BALANCE 2gms Cm
ESTIMATED CRANK WT 20.494 Kgms

Product Spec Sheet FORD 3.4Ltr V6 72.42 STROKE

NOTES
GAS NITRIDE FOR 65
HRS AT 510 / 515 C TO
ACHIEVE CASE
DEPTH OF 0.4 / 0.45mm

PROJECTION	
MACHINING TOL. UNLESS STATED	GEN TOLS +/- 0.2 GEN MC 3
DIMENSIONS IN	mm
Modelled By	MICK VINES

SWINDON RACING ENGINES Ltd.			
Engine	3.4 Ltr V6 24v FORD GA		
Title	CRANKSHAFT 72.42 STROKE		
Mat'l	STEEL BS970 722M24 (EN40B-T)		
Treatment			
Sheet	of	Issue	1
Scale	1:2 @ A2	Date	12/10/06
Detailed By	MICK	Drng No.	GAS 2072